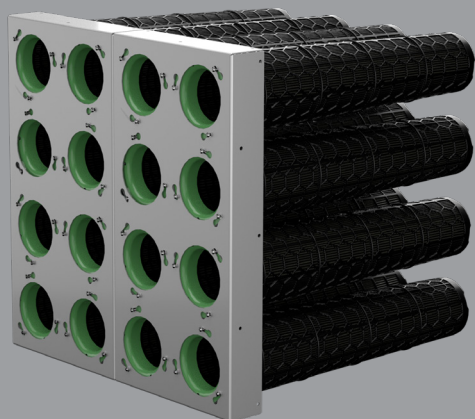




Combines high-capacity adsorbent cylinders and unique bayonet pin mounting system in a side-access housing that delivers excellent gaseous contamination control.



The Camfil GlidePack CamCarb Cylinder Housing is a side-access filter housing for cylindrical adsorbent cylinders recommended for high gas/vapor load make-up air, recirculation and exhaust applications. The housing holds innovative cylinder filters that are equipped with a gasketed seal and that offer higher capacity and removal efficiency than any other adsorbent system in this duty range. Each CamCarb Cylinder Housing:

- Includes a unique frame bayonet mounting system that limits air bypass around the CamCarb cylinder filters. Includes three extruded aluminum filter slide tracks. Each track includes a polypropylene fin seal on the filter track to limit air bypass.
- The first track accommodates a 2" deep particulate filter which can be utilized as a prefilter or a post filter, depending on the installation orientation of the CamCarb cylinder frame. The second and third track allow the cylinder frame to be installed either right hand or left hand orientation. The main track is designed to accommodate the frame with CamCarb cylinder filters.
- Is constructed of 16-gauge galvanized steel and includes pre-drilled standing flanges to mate to existing housings (multi-stage filtration) or directly to HVAC equipment. All components are weatherproof without modification for interior or exterior installation.
- Includes dual-access doors, utilizing high-memory sponge neoprene door gaskets to ensure door-to-filter seal and allow filter servicing from either side of the unit. The doors swing open and are engineered to be square to the housing flange. UV resistant 'star-style' knobs ensure a renewed tight seal each time the access doors are opened and closed.
- Offers excellent noise attenuation. When matched with CamCarb cylinders, sound attenuation is comparable to conventional silencers and sound absorbing dampers.

CamCarb cylindrical filters, ordered separately, are available with various media options for the removal of a wide variety of gaseous contaminants. Visit [CamCarb XG](#) (plastic) and [CamCarb CM](#) (metal) for more information.



CamCarb Cylinder GlidePack®

Side-Access GlidePack Housing for Cylindrical Molecular Filters

Performance Data (Maximum Recommended Air Flow Capacity)

Number of Filters High	Height	Number of Filters wide											
		1/2	1	1½	2	2½	3	3½	4	4½	5	5½	6
1/2	1' 3 ¼"	—	1000	—	2000	—	3000	—	4000	—	5000	—	6000
1	2' 3 ¼"	1000	2000	3000	4000	5000	6000	7000	8000	9000	10000	11000	12000
1½	3' 3 ½"	—	3000	—	6000	—	9000	—	12000	—	15000	—	18000
2	4' 3 ½"	2000	4000	6000	8000	10000	12000	14000	16000	18000	20000	22000	24000
2½	5' 3 ¾"	—	5000	—	10000	—	15000	—	20000	—	25000	—	30000
3	6' 3 ¾"	—	6000	9000	12000	15000	18000	21000	24000	27000	30000	33000	36000
3½	7' 4"	—	7000	—	14000	—	21000	—	28000	—	35000	—	42000
4	8' 4"	—	8000	12000	16000	20000	24000	28000	32000	36000	40000	44000	48000
Width		1' 0"	2' 0"	3' 0"	4' 0"	5' 0"	6' 0"	7' 0"	8' 0"	9' 0"	10' 0"	11' 0"	12' 0"

Data Notes:

- Housing depth is 37".
- Consult factory for weight of other adsorbent media types.
- Removal efficiency and filter lifetime can be improved by decreasing face velocity.
- See CamCarb XG and CamCarb CM product sheets for filter selection. Filters ordered separately.

Specification

1.0 General

1.1 - Housing shall be dual-stage filter system consisting of 16-gauge aluminized steel enclosure, cylindrical filter mounting frames, integral prefilter and dusting filter frames and extruded aluminum holding frame tracks.

1.2 - Sizes shall be as noted on enclosed drawings or other supporting materials.

2.0 Construction

2.1 - The housing shall be constructed of 16-gauge galvanized steel with pre-drilled standing flanges to facilitate attachment to other system components. Corner posts of Z-channel construction shall ensure dimensional adherence. The housing shall be weatherproof and suitable for rooftop/outdoor installation. Housing depth shall not exceed 37".

2.2 - Three extruded aluminum frame support tracks shall be integral components of housing construction. Each track shall include a polypropylene fin seal to limit frame air bypass.

2.3 - Dual access doors, swing-open type, shall include a sponge neoprene gasket to facilitate a door-to-door seal. Each door shall be equipped with adjustable and replaceable positive sealing UV-resistant star-style knobs and replaceable door hinges.

2.4 - A holding frame of 16-gauge steel shall facilitate a 2" deep filter for prefiltration or service as a dusting filter.

2.5 - The housing shall include a cylindrical filter mounting frame of 14-gauge aluminized steel for installation of Camfil CamCarb cylinder filters. Holding frame shall be true to ensure filter-to-frame seal and to limit air bypass.

2.6 - A pneumatic pressure fitting shall be included to allow evaluation of pressure drop across filter assembly.

3.0 Performance

3.1 - System pressure drop shall not exceed 0.85" w.g. at a velocity of 500 fpm when mounted to matching cylinder holding frame.

3.2 - Accuracy of pneumatic pressure fitting shall be accurate to within ± 3% at 0.6" w.g.

3.3 - Manufacturer shall provide evidence of facility certification to ISO 9001:2015



For detailed specifications, please consult your local Camfil distributor, representative or visit [GlidePack CamCarb Cylinder Housing](#). Camfil has a policy of uninterrupted research, development and product improvement. We reserve the right to change designs and specifications without notice.